

Setup Utility Guide

OPOS Driver

Ver. 1.00

AP3

Introduction

This is a manual about how to register and configure POSPrinter produced by AP3 with AP3 OPOS Driver

[Further Source]

OLE for Retail POS committee available from <http://monroecs.com/opos.htm>

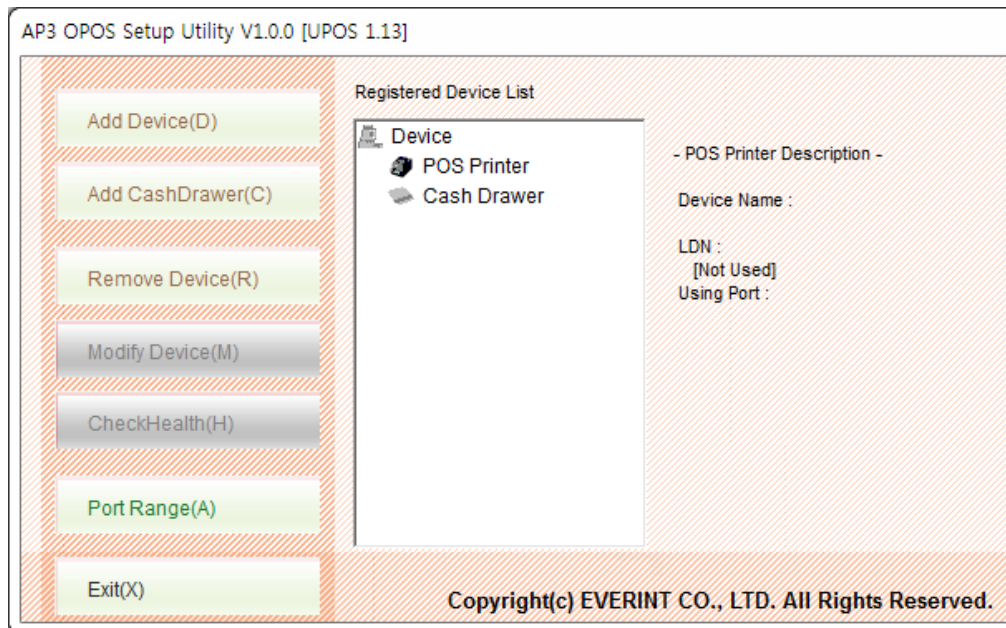
Table of Contents

1. AP3 OPOS Setup	4
1-1 POSPrinter Registration	5
1-2 CashDrawer Registration	8
1-3 Port range setting	10

1. AP3 OPOS Setup

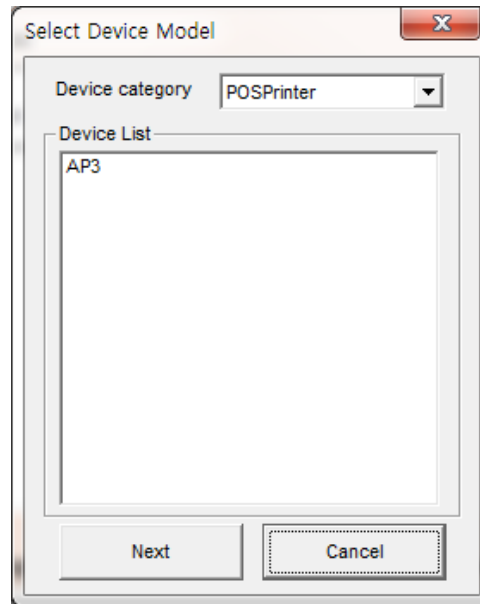
After AP3 OPOS Driver installation, execute “AP3 OPOS Setup” to register or configure devices.

- * “AP3 OPOS Setup” that is located in.
- * Start> Programs> AP3 OPOS Driver> “OPOS SETUP UTILITY”
- * When OPOS SETUP UTILITY runs, the main screen appears.



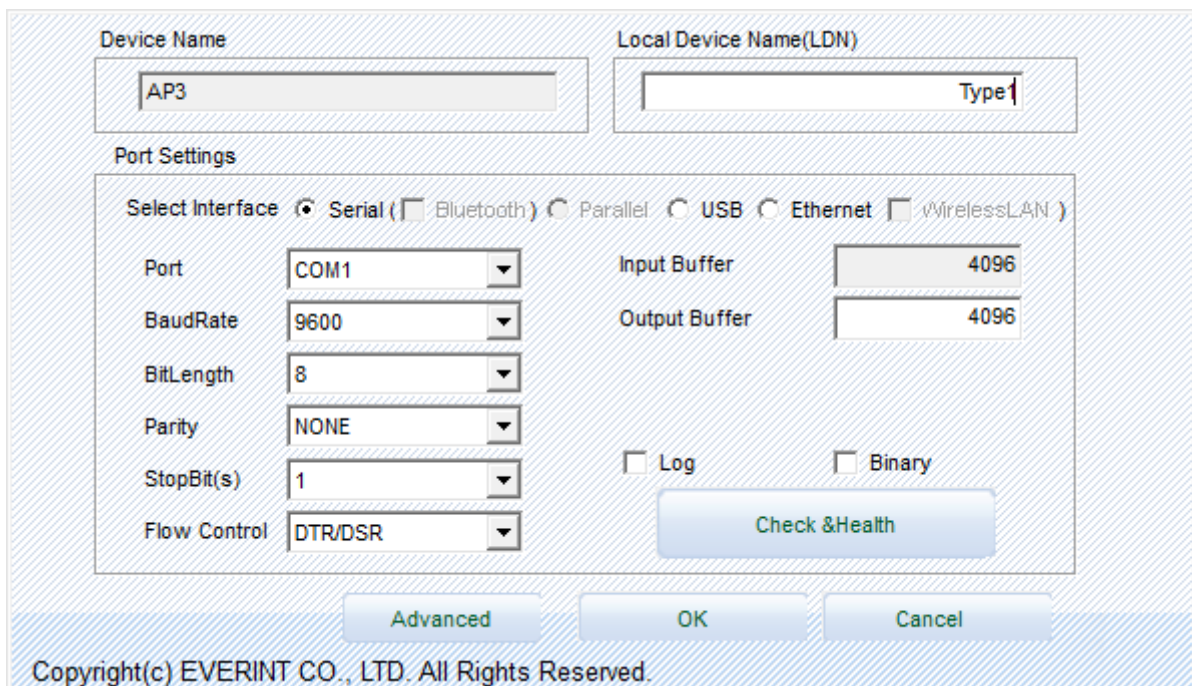
1-1 POSPrinter Registration

1) Click “Add Device” button.



2) Select “POSPrinter” in Device Category.

3) Select the desired printer model from the Device List and click the "NEXT" button.



4) Set the communication environment of the connected printer and click “OK” button.



Note

- Please check the 'Log' and 'Binary' checkbox when it's necessary only. Otherwise Hard Drive capacity will be lack of containing other files due to the 'Log' and 'PRN' checkbox function.
- OPOS log files can be found in the following locations.
 - * **Windows XP**
=> C:\Program Files\OPOS\AP3 OPOS DRIVER\Log
 - * **VISTA and later - user account**
=> C:\users\<accounts name>\AppData(hidden folder)\Local\VirtualStore\Program Files\OPOS\AP3 OPOS DRIVER\Log
 - * **VISTA and later - administrator account**
=> C:\Program Files\OPOS\AP3 OPOS DRIVER\Log

5) Click "Advanced" button to set values related to advanced settings.

Device Name

AP3

Advanced

Default font	A	Image processing	None
Characterset	437	Image brightness	0 (0 - 100)
Thai Combination	Disable	Threshold value	127 (0 - 255)
International charset	USA		
Left margine	0		
Character right-space	0		

Save Cancel

Copyright(c) EVERINT CO., LTD. All Rights Reserved.

6) Set Image Print options and Default font, Characterset, Thai Combination, International charset, etc.



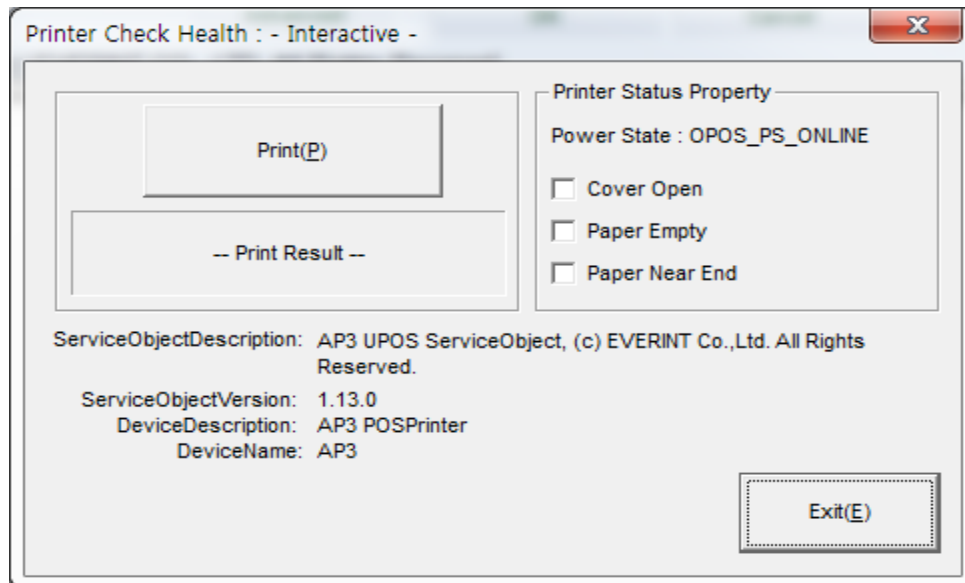
Note

If the settings of default font, charset, international charset, etc. are overlapped, the settings of the program get priority.

7) It is possible to adjust the brightness of an image, and to select image-processing options. Click "Save" button to save the values.

- 8) If the "CheckHealth" button is selected and the following screen is displayed, communication with the printer is normally connected.

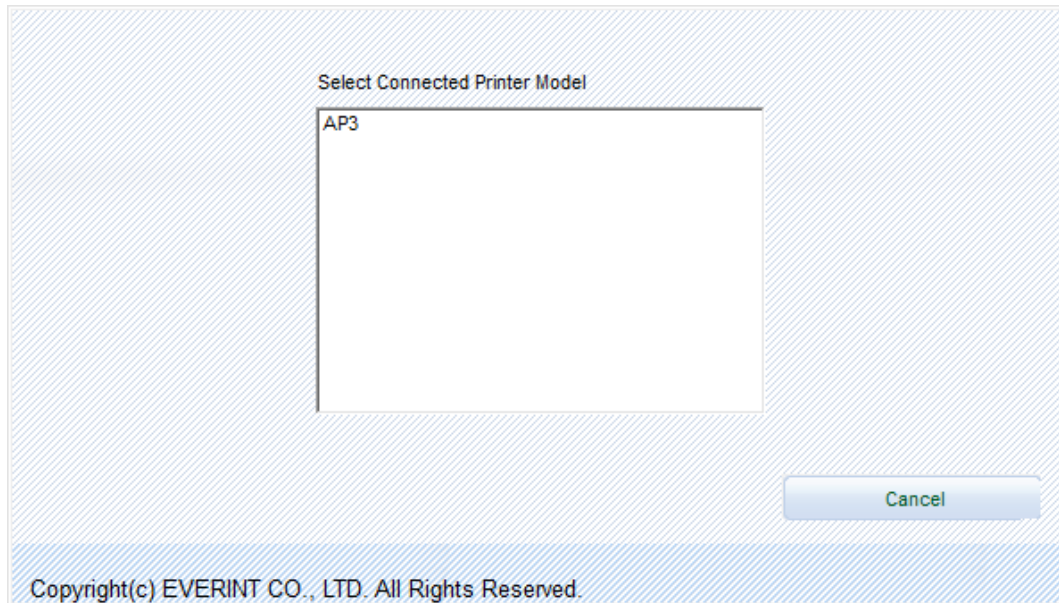
<POSPrinter CheckHealth Dialog >



Item	Description
Logical Device Name (LDN) [Edit Box]	The device can be used with the new LDN value.
Port [Drop List Combo Box]	Port setting
Bits per second [Drop List Combo Box]	If serial port is used, set Baudrate.
Bit Length [Drop List Combo Box]	If serial port is used, set Bit Length
Parity Bits [Drop List Combo Box]	If serial port is used, set Parity Bit
Stop Bits [Drop List Combo Box]	If serial port is used, set Stop bit
Handshake [Drop List Combo Box]	If serial port is used, select Handshake type.
Input Buffer (byte) [Edit Box]	Select the input buffer size. (32 to 8192)
Output Buffer (byte) [Edit Box]	Select the output buffer size. (32 to 4096)
CheckHealth	Summon the device's CheckHealth (Level = OPOS_CH_INTERACTIVE) function. (This function can check the status of the printer.)
Apply or OK [Button]	Saves the current setting.
Cancel [Button]	Exit without saving the current setting.

1-2 CashDrawer Registration

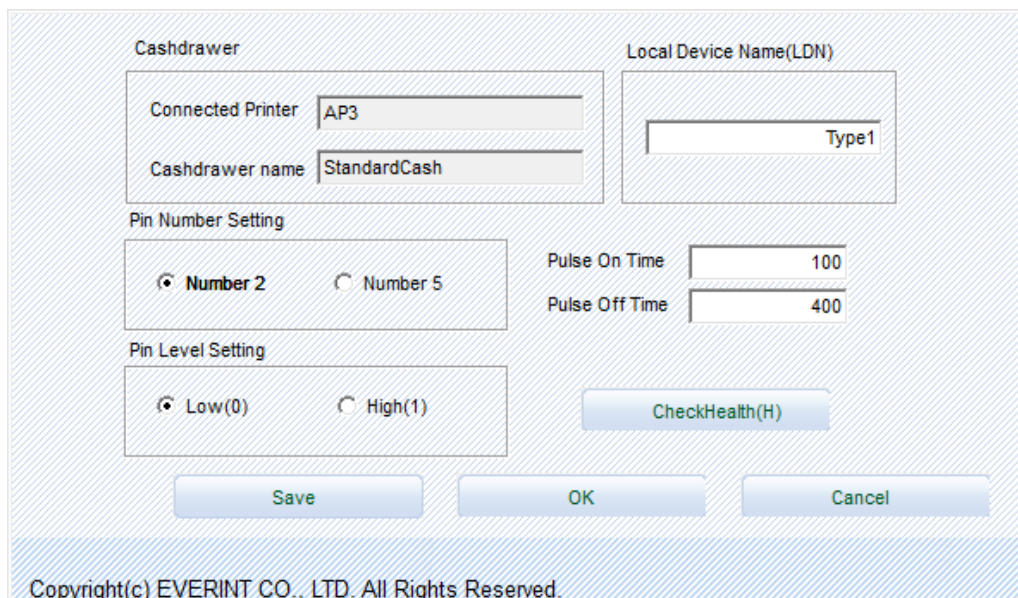
- 1) Click “Add CashDrawer” button.
- 2) From the connected printer list, select the desired printer with CashDrawer.



Note

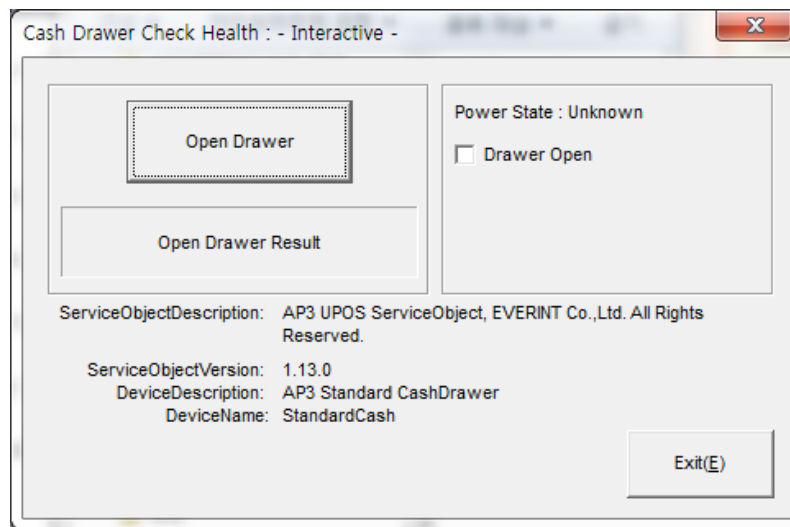
If the printer connected to cashdrawer is not listed, add the printer first.

- 3) Set up CashDrawer and click “SAVE” or “OK” button.



- 4) If "CheckHealth" button is selected and the following screen is displayed, communication with CashDrawer is normally connected.

<CashDrawer CheckHealth Dialog >



Note

- If the cash drawer is not open after selecting the button of Open Drawer, it is necessary to change 'Pin Number Setting'.
- You shall adjust the Pin level setting, if the cashdrawer status changed from 'open' to 'close'.

Item	Description
Pin Number	Set the pin number of cashdrawer output signal connector. (default: 2)
Pin Level	Set the closed state signal of the cashdrawer. (default: Low)
Pulse ON time	Set the ON time of the output signal. (default: 100 ms)
Pulse OFF time	Set the OFF time of the output signal. (default: 400 ms)
CheckHealth	Summon the device's CheckHealth (Level = OPOS_CH_INTERACTIVE) function. (This function can check the status of the cashdrawer.

1-3 Port range setting

- If port number supported by system does not appear when setting up device's communication, set the range of port number from the screen below that appears by selecting the "Set Port Range" button on the main screen of Setup Utility.



Note

If select the port that the system doesn't have, the device won't operate.

Copyright

© Everint Co., Ltd. All rights reserved.

This user manual and all property of the product are protected under copyright law.

It is strictly prohibited to copy, store, and transmit the whole or any part of the manual and any property of the product without the prior written approval of Everint Co., Ltd.

The information contained herein is designed only for use with this Everint product.

Everint is not responsible for any direct or indirect damages, arising from or related to use of this information.

- The Everint logo is the registered trademark of Everint Co., Ltd.
- All other brand or product names are trademarks of their respective companies or organizations.

Everint Co., Ltd. maintains ongoing efforts to enhance and upgrade the functions and quality of all our products.

In the following, product specifications and/or user manual content may be changed without prior notice.

Caution

Some semiconductor devices are easily damaged by static electricity. You should turn the printer “OFF”, before you connect or remove the cables on the rear side, in order to guard the printer against the static electricity. If the printer is damaged by the static electricity, you should turn the printer “OFF”.

Revision history

[illegible]