

Posiflex PP8000 POS Printer

Service Object User Manual for POS.NET

Overview:

- Service Object Name: Posiflex PP8000 POS Printer
- UPOS Version: 1.12
- Supported Interface: USB, Serial
- Supported Codepage: U.S. Standard(437), Greek(737, 1253), Latin(850, 852), Russian(855, 866, 1251), Turkish(857, 1254), Portuguese(860), Euro Multilingual(858), Canadian French(863), Nordic(865), Japanese(932), Korean(949), Arabic(1256), Baltic(1257)

Setting the Baud Rate for PP8000 USB

Although the PP8000 is an USB printer, it is mapped as a virtual serial port in the computer. User need to configure the SO accordingly as follows.

1. Execute the [Posiflex Device Manager](#).
2. Select POS Printer in the [Device Type](#) combo.
3. Wait till the [Device Class](#) list box is populated and verify that the printer under consideration is correctly listed there.
4. Select the printer in the [Device class](#) list box. This will retrieve the device information and fill the appropriate fields in the [Posiflex Device Manager](#).
5. A window similar to follow figure will be shown with the [Baud Rate combo](#) enabled.
6. Set the baud rate in the combo as given in the DIP switch settings of the printer. (Please refer to the Printer Data Sheets on how to set the baud rate using the DIP switches)
7. Press [Update Device](#) button to make the changes.

Posiflex Device Manager Ver 1.1.0

Device Settings

Device Type: PosPrinter

Name:

Service Object: Posiflex PP8000 USB POS Prin

Hardware Path:

Baud Rate: 1200

Parity:

Character Set:

Buttons: Add Device, Health Check, Remove Device

Device Information

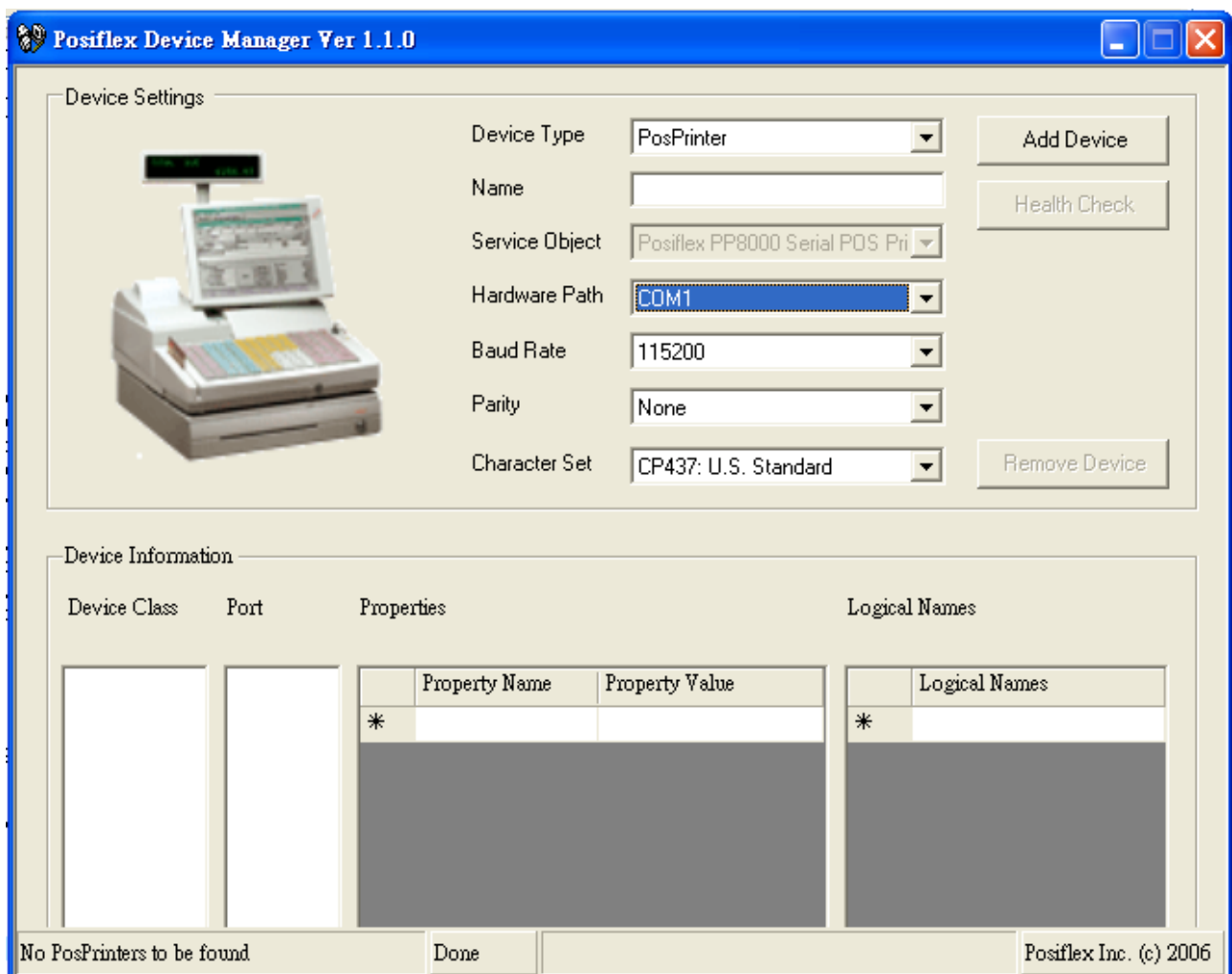
Device Class	Port	Properties	Logical Names						
		<table border="1"><thead><tr><th>Property Name</th><th>Property Value</th></tr></thead><tbody><tr><td>*</td><td></td></tr></tbody></table>	Property Name	Property Value	*		<table border="1"><thead><tr><th>Logical Names</th></tr></thead><tbody><tr><td>*</td></tr></tbody></table>	Logical Names	*
Property Name	Property Value								
*									
Logical Names									
*									

Status: No PosPrinters to be found Done Posiflex Inc. (c) 2006

Add Device for PP8000 Serial:

Because serial interface can not support PnP(Plug and Play) function, user need to add serial device manually. Once you add serial device successful, next time you can see this device automatically list in the [Device Class](#).

1. Execute the [Posiflex Device Manager](#).
2. Select POS Printer in the [Device Type](#) combo.
3. Select "Posiflex PP8000 Serial POS Printer" in the [Service Object](#) combo.
4. Select a serial port that connects to POS Printer.
5. Set the baud rate in the combo as given in the DIP switch settings of the printer. (Please refer to the Printer Data Sheets on how to set the baud rate using the DIP switches)
6. Select parity parameter for POS Printer.
7. Press [Add Device](#) button to make the changes.



Posiflex Device Manager Ver 1.1.0

Device Settings

Device Type: PosPrinter

Name:

Service Object: Posiflex PP8000 Serial POS Pri

Hardware Path: COM1

Baud Rate: 115200

Parity: None

Character Set: CP437: U.S. Standard

Buttons: Add Device, Health Check, Remove Device

Device Information

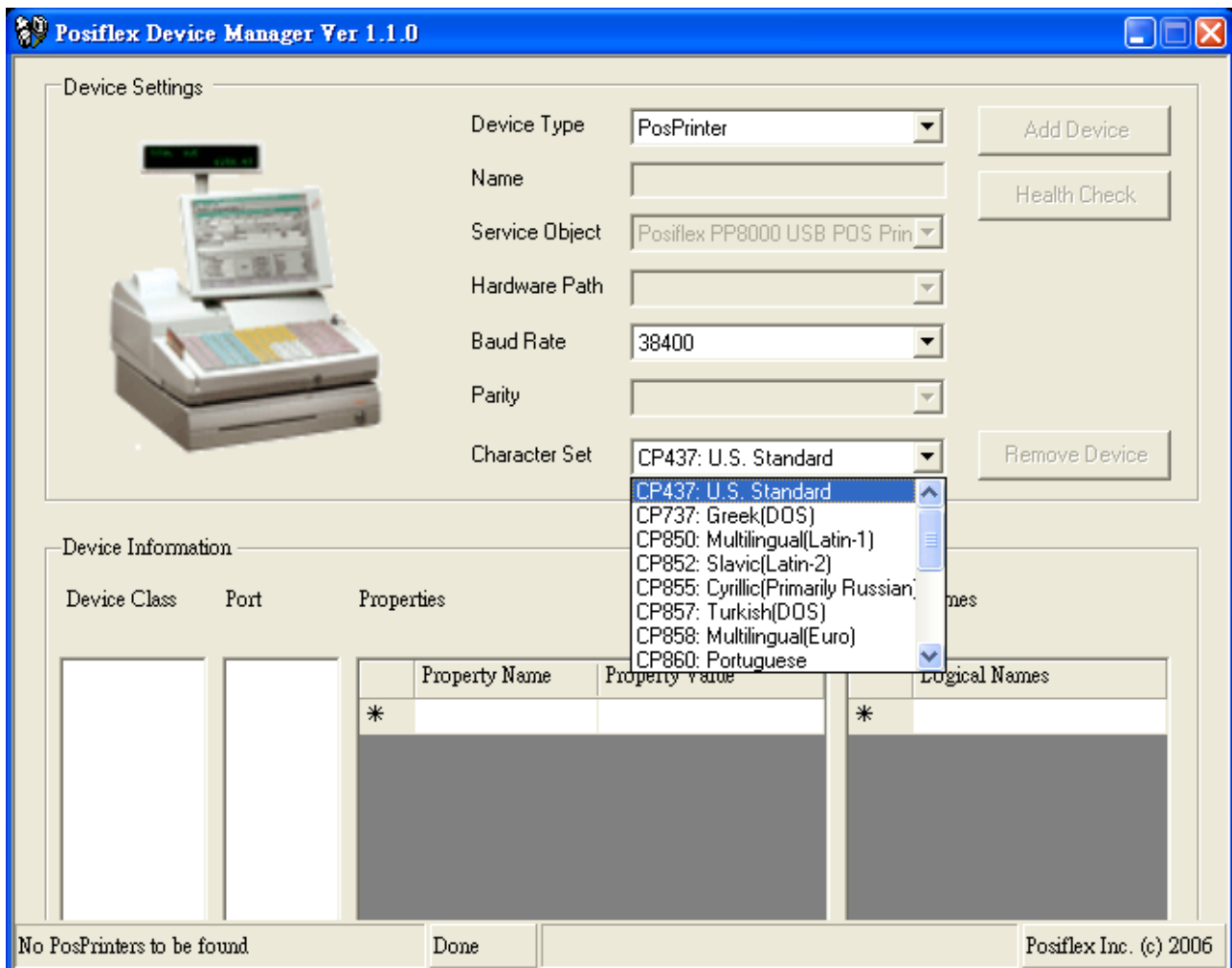
Device Class	Port	Properties	Logical Names						
		<table border="1"><thead><tr><th>Property Name</th><th>Property Value</th></tr></thead><tbody><tr><td>*</td><td></td></tr></tbody></table>	Property Name	Property Value	*		<table border="1"><thead><tr><th>Logical Names</th></tr></thead><tbody><tr><td>*</td></tr></tbody></table>	Logical Names	*
Property Name	Property Value								
*									
Logical Names									
*									

No PosPrinters to be found Done Posiflex Inc. (c) 2006

Setting the default Character Set (Codepage):

If user set the default character set (codepage), this setting will write to POS Printer when you open and claimed the selected printer. If PP8000 Service Object can not find this property, the SO will always use Code Page 437 as default.

1. Execute the [Posiflex Device Manager](#).
2. Select POS Printer in the [Device Type](#) combo.
3. Wait till the [Device Class](#) list box is populated and verify that the printer under consideration is correctly listed there.
4. Select the printer in the [Device class](#) list box. This will retrieve the device information and fill the appropriate fields in the [Posiflex Device Manager](#).
5. A window similar to follow figure will be shown with the [Character Set combo](#) enabled.
6. Press Update device button to make the changes.



Supported Properties for PP8000 POS Printer

Property	Version	Type Access	May Use After
AutoDisable	1.2	Boolean	Not Supported
CapCompareFirmwareVersion	1.9	Boolean	Not Supported
CapPowerReporting	1.3	Int32	Open
CapStatisticsReporting	1.8	Boolean	Open
CapUpdateFirmware	1.9	Boolean	Not Supported
CapUpdateStatistics	1.8	Boolean	Open
CheckHealthText	1.0	String	Open
Claimed	1.0	Boolean	Open
DataCount	1.2	Int32	Not Supported
DataEventEnabled	1.0	Boolean	Not Supported
DeviceEnabled	1.0	Boolean	Open & Claim
FreezeEvents	1.0	Boolean	Open
OutputID	1.0	Int32	Open
PowerNotify	1.3	Int32	Open
State	1.0	Int32	Supported
DeviceControlDescription	1.0	String	N/A
DeviceControlVersion	1.0	Int32	N/A
DeviceServiceDescription	1.0	String	Open
DeviceServiceVersion	1.0	Int32	Open
PhysicalDeviceDescription	1.0	String	Open
PhysicalDeviceName	1.0	String	Open
CapCharacterSet	1.1	Int32	Open
CapConcurrentJrnRec	1.0	Boolean	Not Supported
CapConcurrentJrnSlp	1.0	Boolean	Not Supported
CapConcurrentRecSlp	1.0	Boolean	Not Supported
CapConcurrentPageMode	1.9	Boolean	Not Supported
CapCoverSensor	1.0	Boolean	Open
CapMapCharacterSet	1.7	Boolean	Open
CapTransaction	1.1	Boolean	Open
CapJrnPresent	1.0	Boolean	Not Supported
CapJrn2Color	1.0	Boolean	Not Supported
CapJrnBold	1.0	Boolean	Not Supported
CapJrnDhigh	1.0	Boolean	Not Supported
CapJrnDwide	1.0	Boolean	Not Supported
CapJrnDwideDhigh	1.0	Boolean	Not Supported
CapJrnEmptySensor	1.0	Boolean	Not Supported

CapJrnItalic	1.0	Boolean	Not Supported
CapJrnNearEndSensor	1.0	Boolean	Not Supported
CapJrnUnderline	1.0	Boolean	Not Supported
CapJrnCartridgeSensor	1.5	Int32	Not Supported
CapJrnColor	1.5	Int32	Not Supported
CapRecPresent	1.0	Boolean	Open
CapRec2Color	1.0	Boolean	Not Supported
CapRecBarCode	1.0	Boolean	Open
CapRecBitmap	1.0	Boolean	Open
CapRecBold	1.0	Boolean	Open
CapRecDhigh	1.0	Boolean	Open
CapRecDwide	1.0	Boolean	Open
CapRecDwideDhigh	1.0	Boolean	Open
CapRecEmptySensor	1.0	Boolean	Open
CapRecItalic	1.0	Boolean	Not Supported
CapRecLeft90	1.0	Boolean	Open
CapRecNearEndSensor	1.0	Boolean	Open
CapRecPapercut	1.0	Boolean	Open
CapRecRight90	1.0	Boolean	Open
CapRecRotate180	1.0	Boolean	Open
CapRecStamp	1.0	Boolean	Not Supported
CapRecUnderline	1.0	Boolean	Open
CapRecCartridgeSensor	1.5	Int32	Not Supported
CapRecColor	1.5	Int32	Not Supported
CapRecMarkFeed	1.5	Int32	Not Supported
CapRecPageMode	1.9	Boolean	Not Supported
CapSlpPresent	1.0	Boolean	Not Supported
CapSlpFullslip	1.0	Boolean	Not Supported
CapSlp2Color	1.0	Boolean	Not Supported
CapSlpBarCode	1.0	Boolean	Not Supported
CapSlpBitmap	1.0	Boolean	Not Supported
CapSlpBold	1.0	Boolean	Not Supported
CapSlpDhigh	1.0	Boolean	Not Supported
CapSlpDwide	1.0	Boolean	Not Supported
CapSlpDwideDhigh	1.0	Boolean	Not Supported
CapSlpEmptySensor	1.0	Boolean	Not Supported
CapSlpItalic	1.0	Boolean	Not Supported
CapSlpLeft90	1.0	Boolean	Not Supported
CapSlpNearEndSensor	1.0	Boolean	Not Supported

CapSlpRight90	1.0	Boolean	Not Supported
CapSlpRotate180	1.0	Boolean	Not Supported
CapSlpUnderline	1.0	Boolean	Not Supported
CapSlpBothSidesPrint	1.5	Boolean	Not Supported
CapSlpCartridgeSensor	1.5	Int32	Not Supported
CapSlpColor	1.5	Int32	Not Supported
CapSlpPageMode	1.9	Boolean	Not Supported
AsyncMode	1.0	Boolean	Open
CartridgeNotify	1.5	Int32	Not Supported
CharacterSet	1.0	Int32	Open, Claim & Enable
CharacterSetList	1.0	String	Open
CoverOpen	1.0	Boolean	Open, Claim & Enable
ErrorLevel	1.1	Int32	Open
ErrorStation	1.0	Int32	Open
ErrorString	1.1	String	Open
FontTypefaceList	1.1	String	Open
FlagWhenIdle	1.0	Boolean	Open
MapCharacterSet	1.7	Boolean	Open
MapMode	1.0	Int32	Open
PageModeArea	1.9	String	Not Supported
PageModeDescriptor	1.9	Int32	Not Supported
PageModeHorizontalPosition	1.9	Int32	Not Supported
PageModePrintArea	1.9	String	Not Supported
PageModePrintDirection	1.9	Int32	Not Supported
PageModeStation	1.9	Int32	Not Supported
PageModeVerticalPosition	1.9	Int32	Not Supported
RotateSpecial	1.1	Int32	Open
JrnLineChars	1.0	Int32	Not Supported
JrnLineCharsList	1.0	String	Not Supported
JrnLineHeight	1.0	Int32	Not Supported
JrnLineSpacing	1.0	Int32	Not Supported
JrnLineWidth	1.0	Int32	Not Supported
JrnLetterQuality	1.0	Boolean	Not Supported
JrnEmpty	1.0	Boolean	Not Supported
JrnNearEnd	1.0	Boolean	Not Supported
JrnCartridgeState	1.5	Int32	Not Supported
JrnCurrentCartridge	1.5	Int32	Not Supported
RecLineChars	1.0	Int32	Open, Claim & Enable
RecLineCharsList	1.0	String	Open

RecLineHeight	1.0	Int32	Open, Claim & Enable
RecLineSpacing	1.0	Int32	Open, Claim & Enable
RecLineWidth	1.0	Int32	Open, Claim & Enable
RecLetterQuality	1.0	Boolean	Open, Claim & Enable
RecEmpty	1.0	Boolean	Open, Claim & Enable
RecNearEnd	1.0	Boolean	Open, Claim & Enable
RecSidewaysMaxLines	1.0	Int32	Open, Claim & Enable
RecSidewaysMaxChars	1.0	Int32	Open, Claim & Enable
RecLinesToPaperCut	1.0	Int32	Open, Claim & Enable
RecBarCodeRotationList	1.0	String	Open
RecBitmapRotationList	1.7	String	Not Supported
RecCartridgeState	1.5	Int32	Not Supported
RecCurrentCartridge	1.5	Int32	Not Supported
SlpLineChars	1.0	Int32	Not Supported
SlpLineCharsList	1.0	String	Not Supported
SlpLineHeight	1.0	Int32	Not Supported
SlpLineSpacing	1.0	Int32	Not Supported
SlpLineWidth	1.0	Int32	Not Supported
SlpLetterQuality	1.0	Boolean	Not Supported
SlpEmpty	1.0	Boolean	Not Supported
SlpNearEnd	1.0	Boolean	Not Supported
SlpSidewaysMaxLines	1.0	Int32	Not Supported
SlpSidewaysMaxChars	1.0	Int32	Not Supported
SlpMaxLines	1.0	Int32	Not Supported
SlpLinesNearEndToEnd	1.0	Int32	Not Supported
SlpBarCodeRotationList	1.1	String	Not Supported
SlpBitmapRotationList	1.7	String	Not Supported
SlpPrintSide	1.5	Int32	Not Supported
SlpCartridgeState	1.5	Int32	Not Supported
SlpCurrentCartridge	1.5	Int32	Not Supported

Supported Methods for PP8000 POS Printer

Method	Version	May Use After
Open	1.0	--
Close	1.0	Open
Claim (*1)	1.0	Open
Release	1.0	Open & Claim

CheckHealth	1.0	Open, Claim & Enable
ClearInput	1.0	Not Supported
ClearOutput	1.0	Open & Claim
DirectIO	1.0	Open & Claim
CompareFirmwareVersion	1.9	Not Supported
ResetStatistics	1.8	Open, Claim & Enable
RetrieveStatistics	1.8	Open, Claim & Enable
UpdateFirmware	1.9	Not Supported
UpdateStatistics	1.8	Open, Claim & Enable
BeginInsertion	1.0	Not Supported
BeginRemoval	1.0	Not Supported
ChangePrintSide	1.5	Not Supported
ClearPrintArea	1.9	Not Supported
CutPaper	1.0	Open, Claim & Enable
EndInsertion	1.0	Not Supported
EndRemoval	1.0	Not Supported
MarkFeed	1.5	Not Supported
PageModePrint	1.9	Not Supported
PrintBarCode (*2, *3, *4)	1.0	Open, Claim & Enable
PrintBitmap	1.0	Open, Claim & Enable
PrintImmediate	1.0	Open, Claim & Enable
PrintMemoryBitmap	1.10	Not Supported
PrintNormal	1.0	Open, Claim & Enable
PrintTwoNormal	1.0	Not Supported
RotatePrint	1.0	Open, Claim & Enable
SetBitmap	1.0	Open, Claim & Enable
SetLogo	1.0	Open, Claim & Enable
TransactionPrint	1.1	Open, Claim & Enable
ValidateData	1.1	Open, Claim & Enable

Note 1: Service Object reads Statistics from the device in "Claim" method therefore there will be delay to Claim the printer. Function parameter (timeout: int32) will become the "ASB(Automatic Status Back)" retrieve timer.

Note 2: QRCode1(QRCode mode 1) and QRCode2(QRCode mode 2) please refer to printer user manuals. The enumerate number for QRCode1 is "BarCodeSymbology.Other + 2", for QRCode2 is "BarCodeSymbology.Other + 3". Please don't use "BarCodeSymbology.QRCode".

Note 3: If barcode symbol set to QRCode1 or QRCode2, the parameter "width" will be the symbol module size (range from 1 to 16, default is 3). The parameter

“height” will be the error correction level (range from 1 to 4, default is 1).

Note 4: If barcode symbol set to PDF417, the parameter “width” will be the symbol module size (range from 2 to 8, default is 3). The parameter “height” will be the error correction level (range from 1 to 9, default is 6).

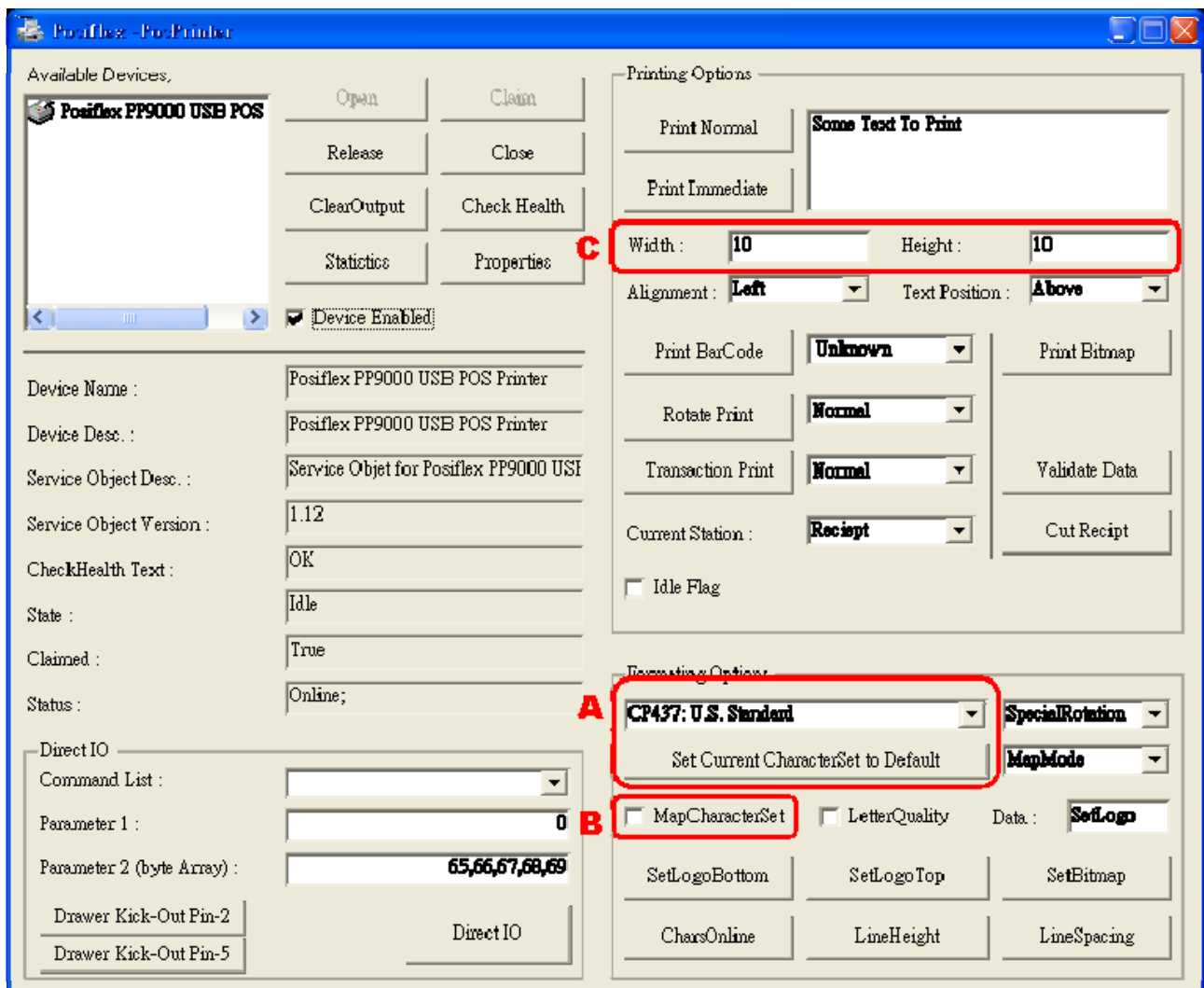
Supported Events for PP8000 POS Printer

Method	Version	May Use After
DataEvent	1.0	Not Supported
DirectIOEvent	1.0	Not Supported
ErrorEvent	1.0	Open, Claim & Enable
OutputCompleteEvent	1.0	Open, Claim & Enable
StatusUpdateEvent	1.0	Open, Claim & Enable

Direct I/O Methods for PP8000 POS Printer

Command Name	Description	Code	Data (Int32)	Additional Data (Byte Array)
REVERSE_VIDEO_ON	Reverse video on	1	--	
REVERSE_VIDEO_OFF	Reverse video off	2	--	
INTERNATIONAL_CHARACTER_SET	Set international character set	3	Character set number	
BOLD_FONT_OFF	Bold fonts off	4	--	
BOLD_FONT_ON	Bold fonts on	5	--	
UNDERLINE_ON	Underline printing on	6	--	
UNDERLINE_OFF	Underline printing off	7	--	
SET_CHAR_SPACING	Set right side character spacing	8	Line spacing	
SET_DRAWER_KICK_OUT	Send open pulse to cash drawer	9	0 for Pin2 1 for Pin5	Byte[0]:Pulse on timer Byte[1]: Pulse off timer

Demo Application for PP8000 POS Printer



Note A: User can have another way to set default character set (codepage).

Note B: Please always set "MapCharacterSet" checked, enable this flag will automatic translate Unicode to specific codepage.

Note C: For QRCode1, QRCode2 and PDF417, the parameters "Width" and "Height" have different meanings. Please refer to "Supported Methods for PP8000 POS Printer".