

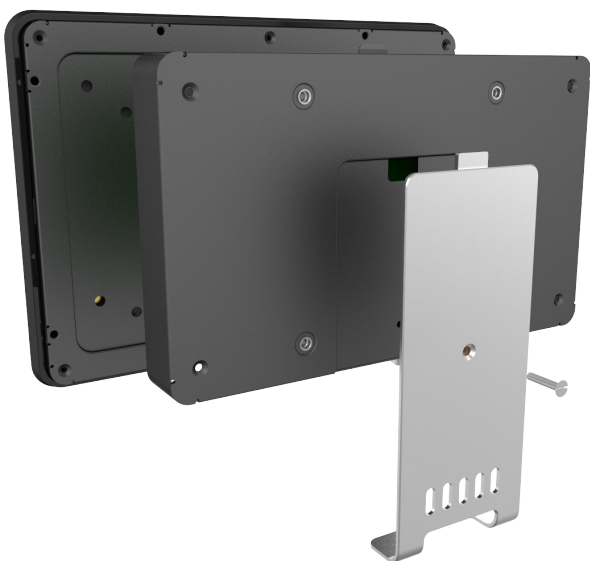
# Element M10-OF

10" Open Frame Touch Display

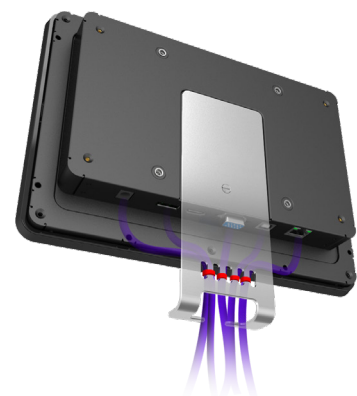


Element M10-OF is an IP65 commercial grade open frame touch display. The 10.1" Full Flat Touch Screen LCD Digital Display has a contrast screen of 1300:1 and its slim bezel free design and 1280 x 800 resolution ensure the sharpest of images.

With 10 point multi touch display and I/O's including HDMI, VGA and USB, the M10-OF is suitable for many applications and multi roles such as Digital Signage Display / Information Display, Self-Check In and Self-Check Out, or Self Service Terminals (Self Ordering).



VESA MOUNT 100 X 100MM



CONVENIENT CABLE MANAGEMENT



# Technical Specifications - Element M10-OF

Item	Parameter	
Size	10.1" TFT LCD	
Maximum Resolution	1280 x 800	
Contrast Ratio	1300:1	
Brightness (Backlight Type)	500 nits (No Touch), 425 nits (Projected Capacitive)	
View Angle	H:170°, V:170°	
Touch LCD Display	Touch Type	Projected Capacitive
	Touch Points	10
	Touch Screen Interface	USB-HID (Type B)
I/O Port	USB Port	1 x USB 2.0 (Type B) for Touch Interface (USB-HID)
	Video Port	1 x VGA (DB15), 1x DP, 1 x HDMI
	Audio Port	1 x Line-Out
	Remote Control Port	1 x RJ-45 for Remote Key
	Power Input	1 x 12V DC Jack with Lock
Physical Properties	Power Supply	36W (12V@3A) External Power Adaptor
	Housing Colour	Black
	Material	Glass, Plastic (ABS), SECC Metal
	Dimensions (W x H x D) mm	260.7 x 183.4 x 39.4
	Ingress Protection	Front Side IP65 Compliant
	Net Weight (kg)	1.4 kg
	Gross Weight (kg)	2.4 kg
	Carton (W x H x D) mm	310 x 160 x 370
	VESA	100 x 100 mm
	Ball Drop / IK	UL60950(500g/1.3m) and IK08
Safety	Certifications	CE (B), FCC Class B, CCC (B), UL, cUL, RCM, RoHS
Environment	Operating Temperature / Humidity	0°C ~ 50°C, 20% ~ 80% RH. Non-Condensing
	Storage Temperature / Humidity	-20°C ~ 60°C, 10% ~ 95% RH. Non-Condensing
Optional Peripherals	Remote Key	1 x RJ-45 (for OSD connector)
Interface	