

PCR/SR Series

Installation Procedures manual

ECR Setting Tool

for PCR/SR Series Electronic Cash Register

CASIO COMPUTER CO.,LTD.

Copyright © CASIO COMPUTER Co.,Ltd. 2013-2018 All Right Reserved.

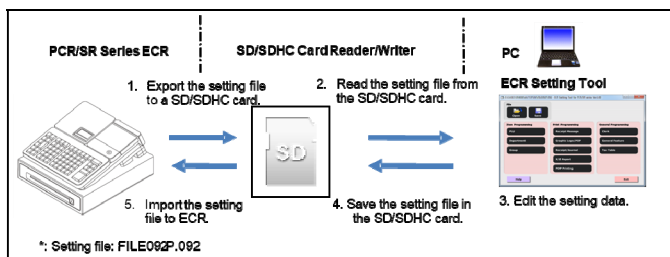
Introduction

This manual explains Installation Procedures for PCR/SR Series ECR Setting Tool.

This manual intends to provide information on the Installation procedures. If you need other information, refer to the relevant documentation.

Software overview

Using a PC system, the ECR Setting Tool creates and edits the setting files of the Register for PCR/SR Series. The ECR Setting Tool edits File092.092 of the Register.



Operating environment

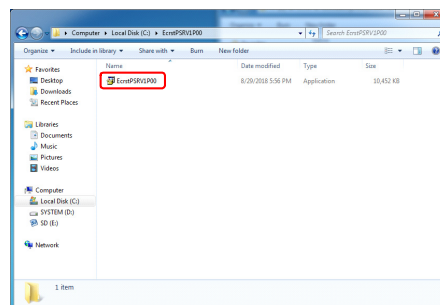
This Software run on PC with Windows operating system.

- Operating System
 - Windows 7 (32Bit/64bit) Service Pack 1 or higher
 - Windows 8,8.1 (32Bit/64bit)
 - Windows 10 (32Bit/64bit)
 - Hardware
 - IBM PC/AT compatible
 - CPU: should meet the system requirements of the OS
 - RAM: should meet the system requirements of the OS
 - Hard disk space: more than 1GB free disk space
 - Display: XGA (1024×768), high color (16-bit) or higher
 - Mouse or other pointing device
 - SD/SDHC Card reader/writer
 - Recommended SD/SDHC card; 2, 4, 8, 16 or 32 GB class 4 or higher
 - Required software
 - Adobe Reader (or Adobe Acrobat 5.0 or higher) is required for showing [Help] on the screen.
 - Adobe Acrobat Ver. 5.0 or higher, or Adobe Reader Ver. 5.0 or higher
- * The help manual for ECR Setting Tool is a pdf format document.

How to Install

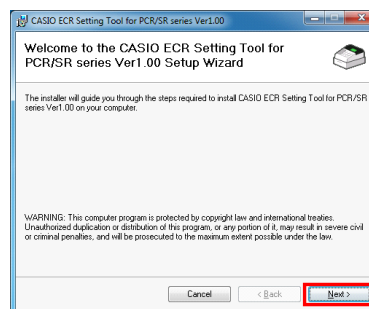
Access administrator account from windows login screen and Install the ECR setting Tool on the PC.

1. Double-click the Exe file inside the folder.

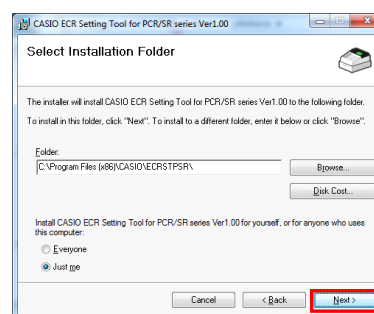


*When another Version of this product is already installed, Installation of this version cannot continue.
To configure or remove the existing version of this product, use Add/Remove Programs on the Control Panel.

2. Setup Wizard screen will appear and Click [Next] button.



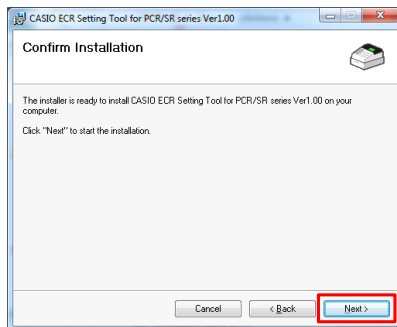
3. Specified a specific directory, Click the [Next] button.



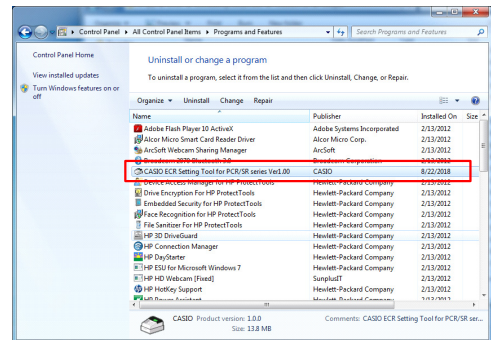
*Select where you want the software to install. Program will automatically default to a specific directory, but you can choose a different one or create your own using the "Browse" button.

How to uninstall

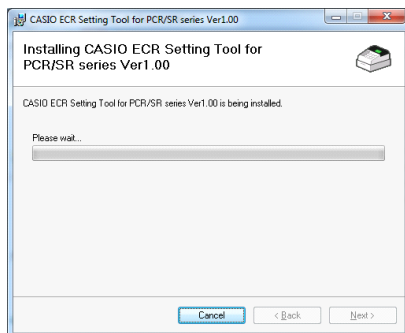
- Click the [Next] button on the Confirm Installation Screen.



If you need to uninstall this program, use Add/Remove Programs on the Control Panel.



- Begin the installation Process.



- Click the [Close] button on the Confirm Installation Screen.

